


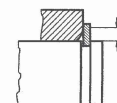
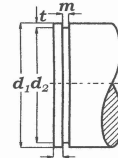
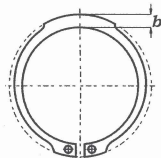
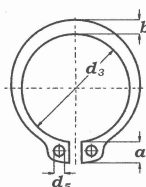


PIERŚCIEŃ DIN 471 AS - WZMOCNIONE

d ₁														D A N E						
	s	Δ	d ₃	Δ	a max.	b ≈	d ₅ min.		(kg/1000)	d ₂	Δ	m min.	t	n	FN (kN)	FR (kN)	g	FRg (kN)	AN (mm ²)	B
12	1.50		11.0		3.4	1.8	1.7	0.75	11.5		1.60	0.25	0.7	1.53	11.3	1.0	4.5	9.2	2.25	75
15	1.50		13.7		4.7	2.4	2.0	1.20	14.2		1.60	0.40	1.2	3.20	15.5		4.5	18.3	2.25	57
15	1.50		13.8		3.7	2.0	1.7	1.20	14.2		1.60	0.40		3.20	15.5		4.5	18.3	2.25	50
16	1.50		14.6	+0.10	4.8	2.5	2.0	1.20	15.1		1.60	0.45	1.3	3.64	16.7		4.5	21.9	2.25	44
16	1.50		14.7	-0.36	3.6	2.3	1.7	1.20	15.2	-0.11	1.60	0.40	1.2	3.26	16.7		4.5	19.6	2.25	48
17	1.50		15.7		3.8	2.3	1.7	1.24	16.0		1.60	0.50	1.5	4.32	18.0	1.0	4.5	25.9	2.25	46
18	1.50	-0.06	16.3		3.9	2.4	2.0	1.54	16.8		1.60	0.60	1.8	5.50	26.6	1.5	5.8	33.0	1.56	43
19	1.50		17.5		4.0	2.5	2.0	1.45	17.8		1.60	0.60		5.78	26.6		5.9	34.7	1.56	28
20	1.75		18.3		5.5	3.0	2.5	2.31	18.8		1.85	0.60		6.05	36.3		8.2	36.6	2.12	36
20	1.75		18.4		4.1	2.6	2.0	2.25	18.9		1.85	0.55	1.6	5.60	36.3		8.2	33.8	2.12	32
22	1.75		20.5		4.3	3.1	2.0	2.30	21.0	-0.15	1.85	0.50	1.5	5.60	36.0	1.5	8.1	33.8	2.12	29
22	1.75		20.3		5.9	3.2	2.0	2.40	20.8		1.85	0.60	1.8	6.70	36.0		8.1	40.6	2.12	29
23	1.75		21.3		6.6	3.2	2.4	2.60	21.8		1.85	0.60		7.04	35.2		8.1	42.2	2.12	27
24	1.75		22.0		4.3	3.2	2.0	2.70	22.7		1.85	0.65	1.9	7.95	34.2		7.6	47.7	2.12	29
25	2.00		23.0		5.6	3.4	3.0	3.40	23.7		2.15	0.65		8.30	45.0		10.3	49.7	2.78	25
25	2.00		23.0	+0.21	4.4	3.4	2.0	3.35	23.7		2.15	0.65	1.9	8.30	45.0	1.5	10.3	49.7	2.78	25
26	2.00		23.6	-0.42	6.6	3.3	2.5	3.65	24.4		2.15	0.80	2.4	10.70	44.0		10.0	63.0	2.73	27
27	2.00		24.7		5.6	3.4	3.0	3.85	25.5		2.15	0.75	2.3	10.30	45.5		10.6	62.0	2.78	25
28	2.00		25.9		6.5	3.5	2.5	3.90	26.6		2.15	0.70	2.1	10.00	57.0		13.4	60.0	1.78	22
28	2.00		25.5		5.9	3.5	3.0	3.90	26.4	-0.21	2.15	0.80	2.4	10.40	57.0		13.4	68.4	1.78	22
29	2.00		26.9		5.7	3.8	2.0	4.30	27.6		2.15	0.70	2.1	10.40	56.5	1.5	13.3	62.2	1.78	22
29	2.00		26.9		5.7	3.8	2.0	4.30	27.6		2.15	0.70		10.40	56.5		13.3	62.2	1.78	22
30	2.00		27.9		6.3	4.1	3.0	5.00	28.6		2.15	0.70		10.70	57.0		13.6	64.4	1.78	21
30	2.00		27.6		5.1	3.7	2.0	4.50	28.3		2.50	0.85	2.5	12.90	57.0		13.6	77.8	1.78	20
32	2.00		29.6		6.3	4.1	3.0	5.40	30.3		2.15	0.85	2.4	13.80	55.5	2.0	10.0	83.0	1.78	18
33	2.00	-0.07	30.5		6.7	4.0	2.5	5.20	31.3		2.15	0.85	2.5	14.30	56.0	2.0	10.1	86.0	1.78	18
34	2.50		31.3		5.4	4.2	3.0	6.80	32.1		2.65	0.95	2.8	16.40	87.0		15.6	99.0	2.78	18
34	2.50		31.3		6.3	4.2	3.0	6.90	32.1		2.65	0.95		16.40	87.0		15.6	99.0	2.78	18
35	2.50		32.0	+0.25	5.5	4.1	3.0	7.00	32.8		2.65	1.10	3.3	19.50	86.0		15.4	117.0	2.78	17
35	2.50		32.2	-0.50	6.3	4.2	3.0	7.10	33.0		2.65	1.00	3.0	17.80	86.0		15.4	107.0	2.78	17
36	2.50		33.0		5.5	4.2	3.0	7.50	33.8	-0.25	2.65	1.10	3.3	20.10	101.5	2.0	18.3	121.0	2.04	16
38	2.50		35.0		5.7	4.5	2.5	8.00	35.8		2.65	1.10		21.20	101.0		18.6	127.0	2.04	15
40	2.50		36.5		6.3	4.4	2.5	8.20	37.5		2.65	1.25	3.8	25.30	104.0		19.3	152.0	2.04	14
42	2.50		38.5	+0.39	6.5	4.5	2.5	9.60	39.5		2.65	1.25		26.70	102.0		19.2	160.0	2.04	13
44	2.50		40.5	-0.90	6.5	4.5	2.5	10.40	41.5		2.65	1.25		27.90	101.0		19.1	168.0	2.04	12



**DIN 471 - AS
WZMOCNIONY**



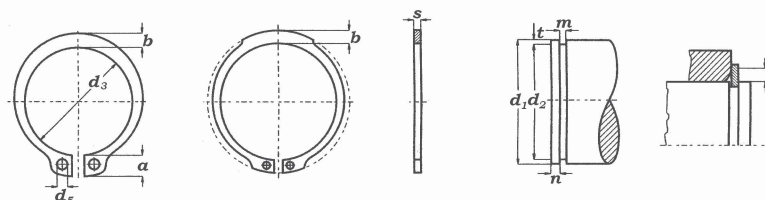
ul. Władysława Łokietka 167B/a, 31-263 Kraków, tel./fax: 012 415 15 01
kom. 601 53 33 66, 504 25 99 11, e-mail: industrial@segery.com.pl www.segery.eu

PIERŚCIEŃ DIN 471 AS - WZMOCNIONE

d ₁																				
	s	Δ	d ₃	Δ	a max.	b ≈	d ₅ min.	(kg/1000)	d ₂	Δ	m min.	t	n	FN (kN)	FR (kN)	g	FRg (kN)	AN (mm ²)	B	n _{det} x100 rpm
45	2.50	-0.07	41.5		6.7	4.7	2.5	10.80	42.5		2.65	1.25	3.8	28.60	100.0	2.0	19.1	172.0	2.04	11
48	2.50		44.5	+0.39	6.9	5.0	2.5	12.20	45.5	-0.25	2.65	1.25		30.70	101.0		19.5	184.0	2.04	10
50	3.00		45.8	-0.90	6.9	5.1	2.5	14.80	47.0		3.15	1.50	4.5	38.20	165.0		32.4	229.0	2.25	11
52	3.00		47.8		7.0	5.2	2.5	15.40	49.0		3.15	1.50		39.70	165.0	2.5	26.0	238.0	2.25	10
55	3.00	-0.08	50.8		7.2	5.4	2.5	17.00	52.0		3.15	1.50		42.00	161.0		25.6	252.0	2.25	9
58	3.00		53.8		7.3	5.6	2.5	19.40	55.0		3.15	1.50	4.5	44.30	160.0	2.5	26.0	266.0	2.25	8
60	3.00		55.8		7.4	5.8	2.5	20.00	57.0		3.15	1.50		46.00	156.0		25.4	276.0	2.25	8
65	4.00		60.8	+0.46	7.8	6.3	3.0	31.00	62.0	-0.30	4.15	1.50		49.80	346.0		58.0	299.0	2.56	7
70	4.00		65.5	-1.10	8.1	6.6	3.0	32.20	67.0		4.15	1.50		53.80	343.0		59.0	323.0	2.56	7
75	4.00		70.5		8.4	7.0	3.0	39.80	72.0		4.15	1.50		57.60	333.0		58.0	346.0	2.56	6
80	4.00	-0.10	74.5		8.6	7.4	3.0	42.40	76.5		4.15	1.75	5.3	71.60	328.0	3.0	50.0	430.0	2.56	6
85	4.00		79.5		8.7	7.8	3.5	47.00	81.5		4.15	1.75		76.30	383.0		59.4	458.0	1.78	6
90	4.00		84.5		8.8	8.2	3.5	55.60	86.5		4.15	1.75		80.80	386.0		61.0	485.0	1.78	5
95	4.00		89.5		9.4	8.6	3.5	61.20	91.5	-0.35	4.15	1.75		85.50	378.0	3.5	52.0	513.0	1.78	5
100	4.00		94.5		9.6	9.0	3.5	72.00	96.5		4.15	1.75		90.00	368.0	3.5	51.6	540.0	1.78	4
105	5.00		98.0	+0.54	10.1	9.3	4.0	100.00	101.0		5.15	2.00	6.0	107.00	734.0	3.5	106.0	646.0	1.56	5
110	5.00		103.0	-1.30	10.1	9.6	4.0	102.00	106.0	-0.54	5.15	2.00		113.00	712.0		105.0	678.0	1.56	4
115	5.00		108.0		10.6	9.8	4.0	105.00	111.0		5.15	2.00		118.00	663.0		102.0	709.0	1.56	4
120	5.00		113.0		11.0	10.2	4.0	107.00	116.0		5.15	2.00		123.00	661.0		101.0	741.0	1.56	4
125	5.00		118.0		11.4	10.4	4.0	112.00	121.0		5.15	2.00		128.00	642.0	4.0	88.0	772.0	1.56	3
130	5.00		123.0		11.6	10.7	4.0	125.00	126.0		5.15	2.00	6.0	134.00	617.0	4.0	86.0	804.0	1.56	3
135	5.00		128.0		11.8	11.0	4.0	130.00	131.0		5.15	2.00		139.00	680.0		86.0	835.0	1.56	3
140	5.00		133.0		12.0	11.2	4.0	137.00	136.0		5.15	2.00		144.00	588.0		84.0	867.0	1.56	3
145	5.00		138.0		12.2	11.5	4.0	143.00	141.0		5.15	2.00		149.00	572.0		83.0	898.0	1.56	3
150	5.00	-0.12	142.0		13.0	11.8	4.0	150.00	145.0		5.15	2.50	7.5	193.00	558.0		82.0	1158.0	1.56	2
155	5.00		146.0	+0.63	13.0	12.0	4.0	169.00	150.0	-0.63	5.15	2.50	7.5	199.00	550.0	4.0	81.0	1198.0	1.56	3
160	5.00		151.0	-1.50	13.3	12.2	4.0	187.00	155.0		5.15	2.50		206.00	546.0		81.0	1237.0	1.56	3
165	5.00		155.5		14.2	12.5	4.0	200.00	160.0		5.15	2.50		212.00	538.0	5.0	64.0	1275.0	1.56	3
170	5.00		160.5		14.2	12.9	4.0	213.00	165.0		5.15	2.50		219.00	546.0		65.0	1315.0	1.56	2
175	5.00		165.5		14.2	12.9	4.0	225.00	170.0		5.15	2.50		225.00	530.0		64.0	1353.0	1.56	2
180	5.00		170.5		14.2	13.5	4.0	238.00	175.0		5.15	2.50	7.5	232.00	538.0	5.0	64.0	1393.0	1.56	2
185	5.00		175.5		14.2	13.5	4.0	250.00	180.0		5.15	2.50		238.00	525.0		63.0	1492.0	1.56	2
190	5.00		180.5		14.2	14.0	4.0	263.00	185.0		5.15	2.50		245.00	521.0		63.0	1471.0	1.56	2
195	5.00		185.5	+0.72	14.2	14.0	4.0	275.00	190.0	-0.72	5.15	2.50		251.00	507.0		61.0	1511.0	1.56	2
200	5.00		190.5	-1.70	14.2	14.0	4.0	288.00	195.0		5.15	2.50		258.00	498.0		59.0	1550.0	1.56	2



**DIN 471 - AS
WZMOCNIONY**



industrial - inox

ul. Władysława Łokietka 167B/a, 31-263 Kraków, tel./fax: 012 415 15 01
kom. 601 53 33 66, 504 25 99 11, e-mail: industrial@segery.com.pl www.segery.eu